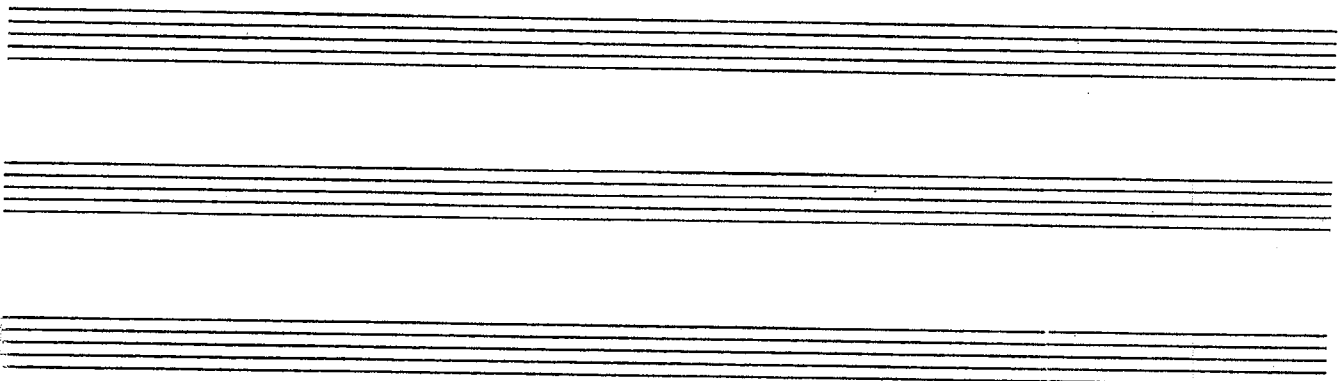


WILL I



Roger

A

PLAY AT # 29

I'M WRIT-ING ONE GREAT SONG BE-FORE I...

B C

1

GTR I solo

2 3 4

Cb2 Gb/Bb Cb2 Ebm Db

5

Steve

6 7 8

WILL I LOSE MY DIG-NI-TY? WILL SOME-ONE CARE?

Cb2 Gb/Bb Cb2 Ebm Db

Steve

9

WILL I WAKE TO-MOR-RON FROM THIS NIGHT MA-RE?

Chords: C_b2, G_b/B_b, C_b2, E_bm, D_b

13

Group #1

WILL I LOSE MY DIG-NI-TY? WILL SOME-ONE CARE?

Chords: C_b2, G_b/B_b, C_b2, E_bm, D_b

Handwritten: Kbd II CHURCH ORGAN

17

WILL I WAKE TO-MOR-RON FROM THIS NIGHT MA-RE?

Chords: C_b2, G_b/B_b, C_b2, E_bm, D_b

Group # 1

21 22 23 24

WILL I LOSE MY DIG- NI- TY? WILL SOME-ONE CARE?

Group # 2

WILL I LOSE MY DIG- NI- TY? WILL SOME-ONE

Cymb Cb2 Ebm Db

25 26 27 28

WILL I WAKE TO-MOR-ROW FROM THIS NIGHT MA- RE?

CARE? WILL I WAKE TO-MOR-ROW FROM THIS NIGHT-

Cb2 Gb/Bb Eb2 Db

29

Group # 1

Musical staff for Group # 1, measures 30-32. The staff contains a melodic line in treble clef with a key signature of three flats (B-flat, E-flat, A-flat). Measure numbers 30, 31, and 32 are indicated above the staff.

WILL I LOSE MY DIG- NI- TY? WILL SOME-ONE CARE?

Group # 2

Musical staff for Group # 2, measures 30-32. The staff contains a melodic line in treble clef with a key signature of three flats. Measure numbers 30, 31, and 32 are indicated above the staff.

MA- RE? WILL I LOSE MY DIG- NI- TY? WILL SOME-ONE

Group # 3

Musical staff for Group # 3, measures 30-32. The staff contains a melodic line in treble clef with a key signature of three flats. Measure numbers 30, 31, and 32 are indicated above the staff.

WILL I LOSE MY DIG- NI- TY?

STRINGS

Musical staff for STRINGS, GTR I CONT. + ORGAN, and BASS. The top staff is for strings with the instruction "STRINGS" and "GTR I CONT. + ORGAN". The middle staff is for guitar/organ with the instruction "GTR I CONT. + ORGAN" and "Legato". The bottom staff is for bass with the instruction "BASS". Chords are indicated below the guitar/organ staff: Cb2, Gb/bb, Cb2, Ebm, Db. The bass staff has a "BASS" instruction and a "BASS" instruction.

Musical staff for Group # 1, measures 33-36. The staff contains a melodic line in treble clef with a key signature of three flats. Measure numbers 33, 34, 35, and 36 are indicated above the staff.

WILL I WAKE TO-MOR-ROW FROM THIS NIGHT- MA- RE?

Musical staff for Group # 2, measures 33-36. The staff contains a melodic line in treble clef with a key signature of three flats. Measure numbers 33, 34, 35, and 36 are indicated above the staff.

CARE? WILL I WAKE TO-MOR-ROW FROM THIS NIGHT-

Musical staff for Group # 3, measures 33-36. The staff contains a melodic line in treble clef with a key signature of three flats. Measure numbers 33, 34, 35, and 36 are indicated above the staff.

WILL SOME-ONE CARE? WILL I WAKE TO-MOR-ROW FROM

Musical staff for STRINGS, GTR I CONT. + ORGAN, and BASS, measures 33-36. The top staff is for strings. The middle staff is for guitar/organ with the instruction "GTR I CONT. + ORGAN". The bottom staff is for bass with the instruction "BASS". Chords are indicated below the guitar/organ staff: Cb2, Gb/bb, Cb2, Ebm, Db.

37 Group # 1 38 39 40

WILL I LOSE MY DIG- NI- TY? WILL SOME- ONE CARE?

Group # 2

MA- RE? WILL I LOSE MY DIG- NI- TY WILL SOME- ONE

Group # 3

THIS NIGHT- MA- RE? WILL I LOSE MY DIG- NI- TY?

Group # 4

WILL I LOSE MY DIG-

f Cb2 Gb/Bb Cb2 Ebm Db

41 42 43

WILL I WAKE TO- MOR- ROW FROM THIS NIGHT-

CARE? WILL I WAKE TO- MOR- ROW FROM

WILL SOME- ONE CARE WILL I WAKE TO- MOR-

NI- TY? WILL SOME- ONE CARE

Cb2 Gb/Bb Cb2

16

44 Group # 1
 MA - RE!

Group # 2
 THIS NIGHT

Group # 3
 - ROW

Handwritten musical notation for three vocal groups and piano accompaniment. The piano part includes chords: Ebm, Db, Cb2, Cb/Db, Ebm.

SEGUE

121